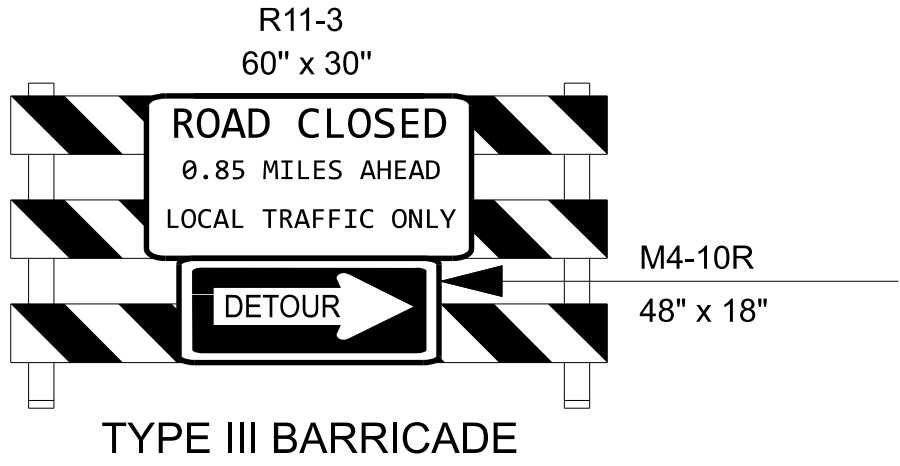
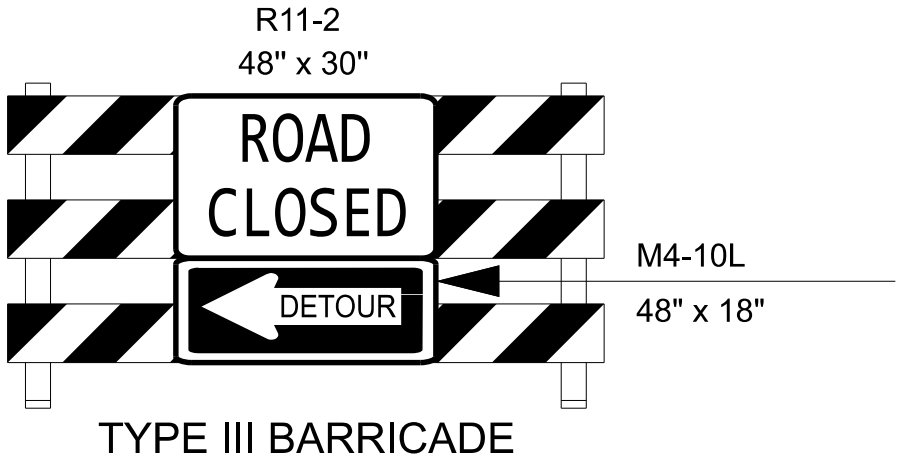


PROJ. REFERENCE NO.	SHEET NO.
DF18314.2045060	TMP -6

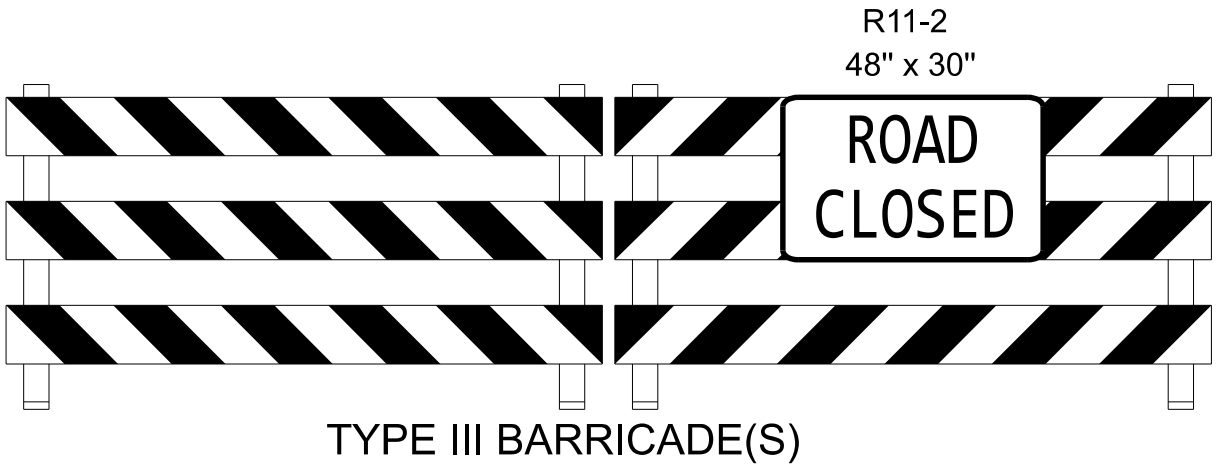
301 FAYETTEVILLE STREET  
SUITE 1500  
RALEIGH, NC 27601  
(919) 882-7839  
NC FIRM LICENSE: C-1506



A



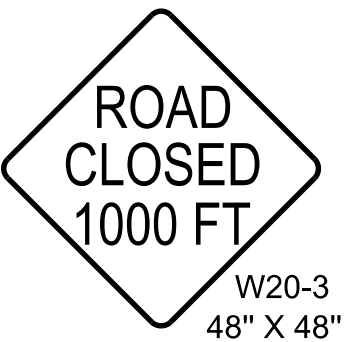
B



C



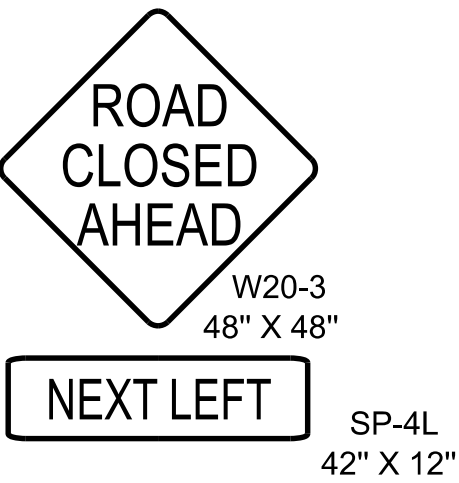
D



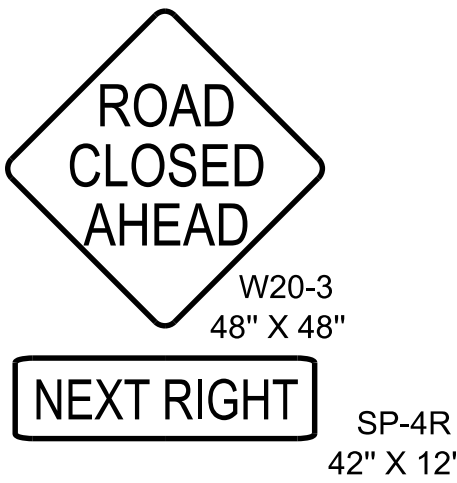
E



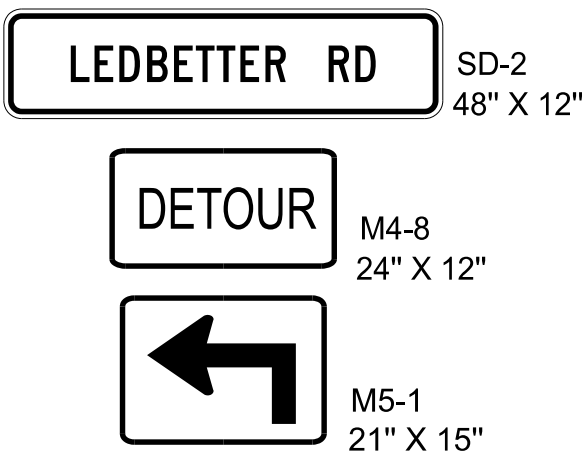
F



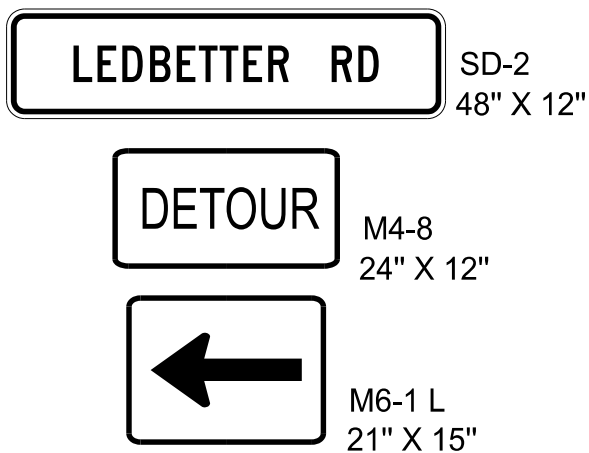
G



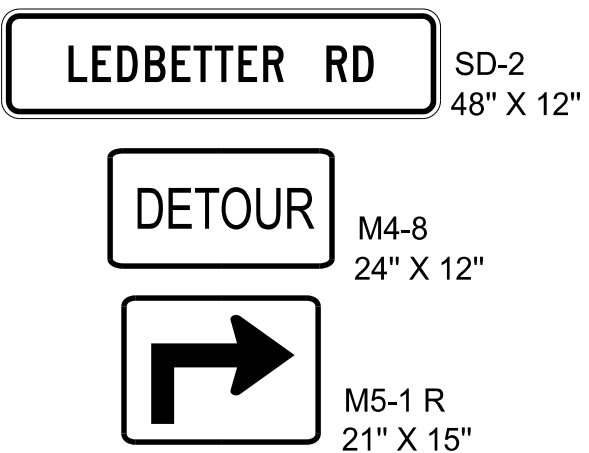
H



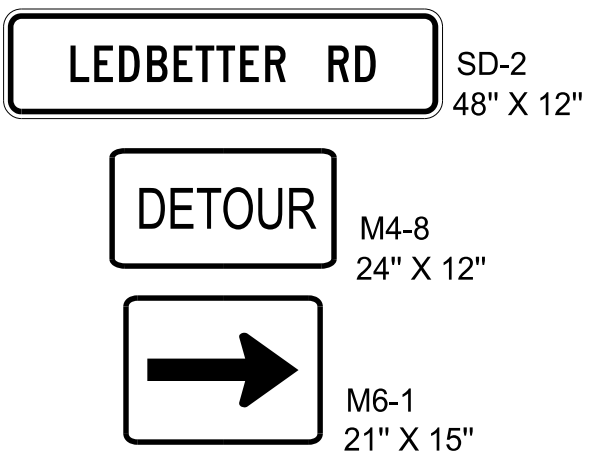
I



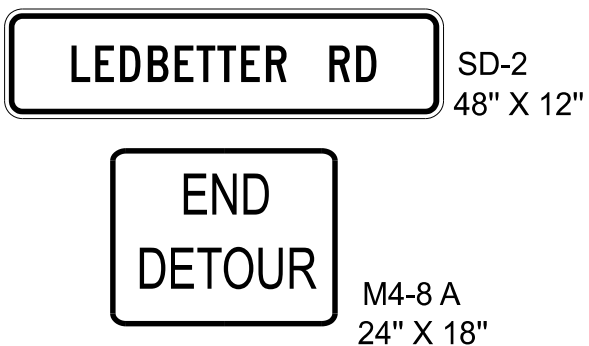
J



K



L



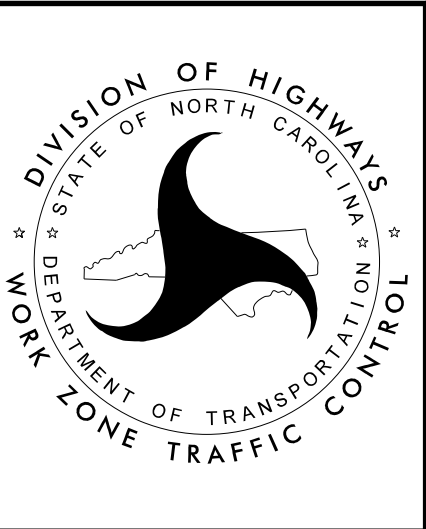
M

NOTES:

- TRAFFIC CONTROL DEVICES (A) THRU (M) SHALL BE INSTALLED PER ENGINEER'S INSTRUCTIONS.
- SIGNS (I) THRU (M) ARE SPACED AT 200 FT PER RSD 1101.11 SHEET 4 OF 4.
- THE CONTRACTOR IS RESPONSIBLE FOR MAINTAINING DRIVEWAY ACCESS THROUGHOUT THE LIFE OF THE PROJECT.
- SEE TMP-2A FOR LEDBETTER ROAD SIGN DESIGN (SD-2).
- USE THIS SHEET IN CONJUNCTION WITH TMP-5 AND RSD 1101.03 SHEETS 1 AND 2 OF 9.

7/29/2025  
DF18314.TC\_TMP\_5.dgn  
User:idebone

APPROVED: _____	Signed by: <i>Jacob H. Duke</i> 29530C0054E94D9.
DATE: 7/29/2025	
SEAL	
DOCUMENT NOT CONSIDERED FINAL UNLESS ALL SIGNATURES COMPLETED	



-Y1- LEDBETTER RD (SR1712)  
OFFSITE DETOUR SIGNING